

## MELAMINE AND LAMINATED PLYWOOD

**NO HORIZONTAL DADO RAILS** **WALLS** melamine. \* Laminated option. No visible join.

**HANDRAIL** round handrail with curved ends in brushed stainless steel to one side.

**MIRROR** 4 mm silver coloured safety mirror strip with polished.

**CEILING** suspended in white powder coated sheet steel with lighting via flush mounted led spots.

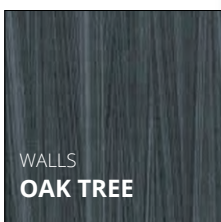
**FLOORING** black antislip rubber.

**RETURNS AND JOINTS** brushed stainless steel.

### NOVA - ML CHAMONIX



For standard loads from 225 to 1600 kg. Other dimensions, consult.



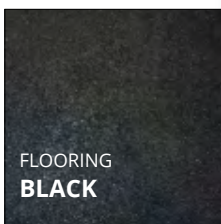
WALLS  
**OAK TREE**



FLOORING  
**WHITE**



RETURNS  
JOINTS  
**BRUSHED**



FLOORING  
**BLACK**



The final aspect of the car might differ from the image in catalogue.  
Our cabins can be customized to your liking. Please consult for other finishes.